

## Friday Flyer – 5<sup>th</sup> January 2024

Dear Parent,

A warm welcome back to everyone after the Christmas break. I hope that you all enjoyed the time with family and friends. As we start the New Year, I'd like to also welcome back **Mrs Ward** who will be teaching our **Y1 Crew** and **Mr Duncanson** who will be teaching our **Reception Crew**. We also welcome **Mrs Flanagan** to the Kelsall Crew who will be supporting our learners as a teaching assistant in **Beech Crew (Y1)**.

It has been lovely to see everyone return and settle back into routines, reconnecting with friends and embarking on exploring their new **Connected Curriculum** book. Each book makes links and **connects** to other curriculum areas – you can see our **Connected Curriculum** documents on the website here; [Kelsall Primary School: Year Group Overviews](#) – if you have any resources or books that might be useful please let class teachers know.

Nursery Saplings	Reception Oak Crew	Year 1 Beech Crew	Year 2 Ash Crew	Year 3 Maple Crew	Year 4 Elm Crew	Year 5 Willow Crew	Year 6 Cedar Crew
							

### Storyhouse & Camp Curiosity

Our Storyhouse and Camp Curiosity sessions continue this year. These form an important part of our curriculum and ensure that pupils are given opportunity to explore our outdoor environment with Gemma, a trained forest school practitioner. Lottie is our creative practitioner and brings the elements of drama, discussion and movement in response to the core curriculum books above.

**Please ensure that pupils are suitably dressed for their Camp Curiosity sessions.**

Wednesdays	Lottie – STORYHOUSE				Tuesdays	Gemma – CAMP CURIOSITY	
	9:15 – 10:30	10:45-11:45	1:15 – 2:00	2:00 3:00		Morning	Afternoon
10 <sup>th</sup> January	6	5	4	3	9 <sup>th</sup> January	5	Reception
17 <sup>th</sup> January	N	R	1	2	16 <sup>th</sup> January	4	Reception
24 <sup>th</sup> January	N	R	1	2	23 <sup>rd</sup> January	3	Reception
31 <sup>st</sup> January	6	5	4	3	30 <sup>th</sup> January	2	Reception
7 <sup>th</sup> February	6	5	4	3	6 <sup>th</sup> February	1	Reception
14 <sup>th</sup> February	N	R	1	2	13 <sup>th</sup> February	Nursery	Reception

# WE ARE KELSALL CREW

No passengers • No one left behind

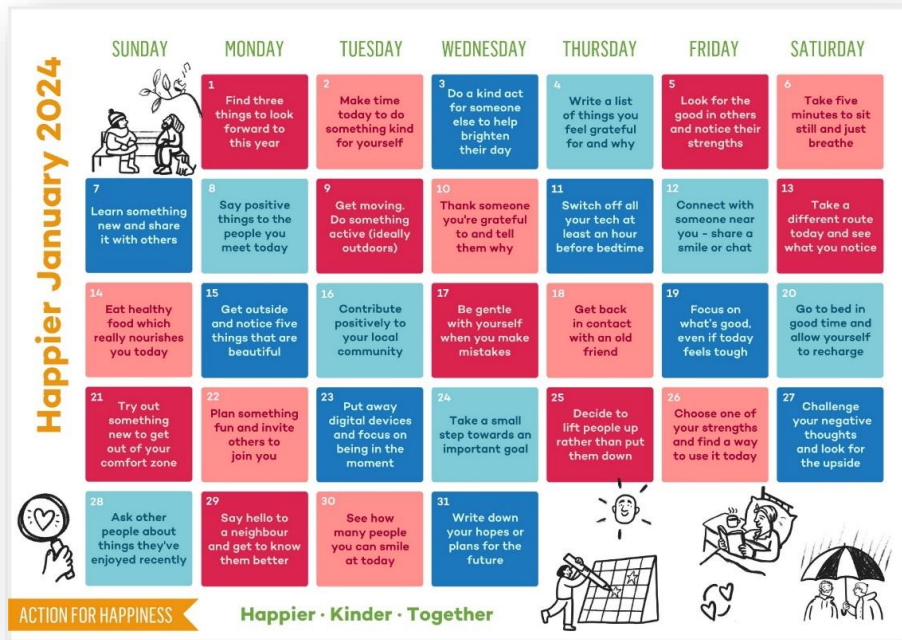
## Attendance Matters

Attendance at school is **important** both academically and for social/emotional reasons. Whilst we understand that pupils will be absent from time to time due to illness; absence from school for other reasons should only be for exceptional circumstances. As a school we look at each request for leave from school on a case by case basis.

**Holidays taken in term time will be subject to a fine.** Where **attendance** falls below **90%** for any pupil, **we will contact you** to discuss this and put in any additional support needed. Persistent absence can also result in a fixed fine.

Each academic year has **190 school days**, this leaves **175 non-school days** for family time, holidays, visits and appointments. If a pupil is absent for just **1 day** each term that equals **6 days or 39 hours** a year of lost learning.

Please ensure you are **on time too** – school starts at **8.40am** – it is important that children are here on time so that they **start the day well and can engage with their crew.** Gates will shut promptly at **8.50am.**



## Diary Dates

Monday 8 <sup>th</sup> January 24	KS2 Cheshire Phoenix Basketball Assembly
W/B Monday 8 <sup>th</sup> January 24	Y5 Bikeability
W/B 15 <sup>th</sup> January 24	School Led Clubs start (for 4 weeks)
Friday 16 <sup>th</sup> February 24	School Closes for <b>SPRING HALF TERM</b>
Monday 26 <sup>th</sup> February 24	School Opens for <b>SPRING TERM 2</b>
Thursday 29 <sup>th</sup> February 24	Y5 Fire safety Talk
Weds 6 <sup>th</sup> to Fri 8 <sup>th</sup> March 24	Y4 Residential – Tattenhall
Monday 25 <sup>th</sup> March 24	Tempest Crew Photos
Wednesday 27 <sup>th</sup> March 24	Y5 Hope Journey - Easter
Tuesday 26 <sup>th</sup> & Wednesday 27 <sup>th</sup> March 24	Parent's Evenings
Thursday 28 <sup>th</sup> March 24	School Closes for <b>EASTER</b>
Friday 29 <sup>th</sup> March 24	School Closed – <b>GOOD FRIDAY</b>
Monday 15 <sup>th</sup> April 24	School Opens for <b>SUMMER TERM 1</b>
Monday 6 <sup>th</sup> May 24	School Closed – <b>BANK HOLIDAY</b>
Tuesday 7 <sup>th</sup> to Friday 9 <sup>th</sup> May 24	Y5 Residential - Cholmondley
Thursday 16 <sup>th</sup> May 24	Tarporley High School Open Evening
Monday 13 <sup>th</sup> to Friday 17 <sup>th</sup> May 24	Y6 SATs Week
Friday 24 <sup>th</sup> May 24	School Closes for <b>SUMMER HALF TERM</b>
Monday 3 <sup>rd</sup> June 24	School Opens for <b>SUMMER TERM 2</b>
Wednesday 19 <sup>th</sup> to Friday 21 <sup>st</sup> June 24	Y6 Residential - Conway
Friday 19 <sup>th</sup> July 24	School closes for <b>SUMMER HOLIDAYS</b>
Wednesday 4 <sup>th</sup> September 24	School Opens for <b>AUTUMN TERM 1</b>



Has someone done something online that has made you or a child or young person you know, feel worried or unsafe? Click on the link to the left



Follow us on Twitter.  
@KelsallSchool



**Be Curious, Creative & Kind**

**Mr Wearing, Mrs White and the Kelsall Crew**