



**Kelsall Primary & Nursery School**  
 Flat Lane, Kelsall  
 Cheshire  
 CW6 0PU  
 Tel 01829 752811  
 website: [www.kelsall.cheshire.sch.uk](http://www.kelsall.cheshire.sch.uk)  
 Principal: Mr David Wearing  
 B.Ed. (Hons.), N.P.Q.H.  
[principal@kelsall.cheshire.sch.uk](mailto:principal@kelsall.cheshire.sch.uk)  
 Vice Principal: Mrs Sarah White  
**'A Love for Learning'**

## Friday Flyer – Friday 5<sup>th</sup> May 2023

Dear Parent

As we move into a busy summer term, this flyer has some important diary dates for you to add to your own calendars. Obviously, there will be more dates to add as things evolve and I will let you know of any changes in plenty of time. You will notice two sports days; one is a reserve in case of bad weather. Also in this flyer; compost, decking, Isle of Man and more.

### Attendance

Attendance at school is important both academically and for social/emotional reasons. Whilst we understand that pupils will be absent from time to time due to illness; absence from school for other reasons should only be for exceptional circumstances. As a school we look at each request for leave from school on a case by case basis.

**Holidays taken in term time will be subject to a fine.** Where **attendance** falls below **90%** for any pupil, **we will contact you** to discuss this and put in any additional support needed. Persistent absence can also result in a fixed fine.

### Camp Curiosity/Storyhouse

	Lottie - STORYHOUSE				Gemma – CAMP CURIOSITY	
	9:15 – 10:30	10:45-11:45	1:15 – 2:00	2:00 – 3:00	Morning	Afternoon
<b>9<sup>th</sup> May 2023</b>	3	4	5	6	Nursery	Reception
<b>16<sup>th</sup> May 2023</b>	1	2	3	4	6	5
<b>23<sup>rd</sup> May 2023</b>	1	2	Nursery	Reception	4	3
<b>6<sup>th</sup> June 2023</b>	3	4	5	6	Nursery	Reception
<b>13<sup>th</sup> June 2023</b>	1	2	3	4	6	5
<b>20<sup>th</sup> June 2023</b>	1	2	Nursery	Reception	4	3
<b>27<sup>th</sup> June 2023</b>	3	4	5	6	Nursery	Reception
<b>4<sup>th</sup> July 2023</b>	1	2	3	4	6	5
<b>11<sup>th</sup> July 2023</b>	1	2	Nursery	Reception	4	3
<b>18<sup>th</sup> July 2023</b>	3	4	5	6	Nursery	Reception

### The Nest

Our Nest is a superb sanctuary where pupils across school can be supported by our **ELSA** (Emotional Literacy Support Assistant) trained **Learning Mentor** – Mrs **Whiteside**. The Nest has its own entrance and a wide range of resources to support pupils and teachers. Mental health and well-being is an important part of our ethos at Kelsall and **The Nest** brings together a range of resources and strategies to do that in a highly effective way. Mrs Whiteside has recently taken courses in **Drawing Therapy** and **Lego Therapy** to support her role. We will keep developing our **Nest Padlet** to share a range of online resources - [The Nest \(padlet.com\)](https://www.padlet.com)



# Meaningful May 2023

## MONDAY

1 Do something kind for someone you really care about

8 Set yourself a kindness mission to help others today

15 Do something to contribute to your local community

22 Find a way to help a project or charity you care about

29 Today do something to care for the natural world

## TUESDAY

2 Focus on what you can do rather than what you can't do

9 What values are important to you? Find ways to use them today

16 Show your gratitude to people who are helping to make things better

23 Recall three things you've done that you are proud of

30 Share a quote you find inspiring to give others a boost

## WEDNESDAY

3 Take a step towards an important goal, however small

10 Be grateful for the little things, even in difficult times

17 Find a way to make what you do today meaningful

24 Make choices that have a positive impact for others today

31 Find three reasons to be hopeful about the future

## THURSDAY

4 Send your friend a photo from a time you enjoyed together

11 Look around for things that bring you a sense of awe and wonder

18 Send a hand-written note to someone you care about

25 Ask someone else what matters most to them and why

31 Find three reasons to be hopeful about the future

## FRIDAY

5 Let someone know how much they mean to you and why

12 Listen to a favourite piece of music and remember what it means to you

19 Reflect on what makes you feel valued and purposeful

26 Remember an event in your life that was really meaningful

31 Find three reasons to be hopeful about the future

## SATURDAY

6 Look for people doing good and reasons to be cheerful

13 Find out about the values or traditions of another culture

20 Share photos of 3 things you find meaningful or memorable

27 Focus on how your actions make a difference for others

31 Find three reasons to be hopeful about the future

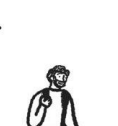
## SUNDAY

7 Make a list of what matters most to you and why

14 Get outside and notice the beauty in nature

21 Look up at the sky. Remember we are all part of something bigger

28 Do something special and revisit it in your memory tonight



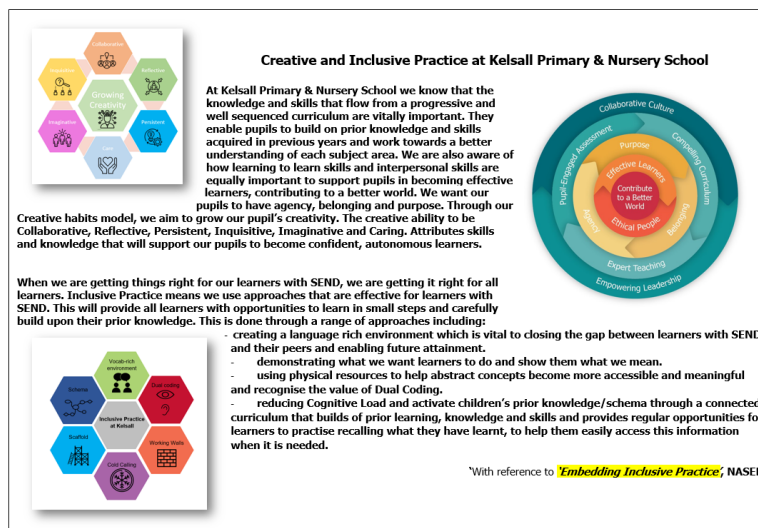
ACTION FOR HAPPINESS

Happier · Kinder · Together

## Curriculum

Over the past term staff have been working hard to refine and develop their curriculum maps. These show the key areas of learning for each class with detailed information about core knowledge and vocabulary. In addition, we have been developing the language of creativity across all subject areas as well as focusing on supporting all pupils including those with SEND. The new documents are now on the website - [Kelsall Primary School: Year Group Overviews](#)

Opposite is an example of some of the key changes and. The end points in our curriculum are the vital, important knowledge, skills and understanding that we want pupils to know and learn. These sequentially build year on year.



## CAMP CURIOSITY



Our Outdoor Learning area to explore; create; think; connect...

## Camp Curiosity

We continue to develop our Camp Curiosity area with the support of you all through the PTA. The PTA have purchased us a bell tent that will be used as an indoor sheltered area. To make the tent last longer and to protect the ground sheet we will be building a decked area. If anyone is able to support with this then please let me know. In addition, we are looking for **compost** to top up our raised beds. **If you have a bag spare at home or can help with purchasing one or more then just drop them at the gate.** The fruits (& veg) of the allotment area will be used in Camp Curiosity sessions and our after school club provision will be utilising this area too.



## Y5 Isle of Man

Y5 enjoyed a week long residential visit to the Isle of Man Venture Centre at the start of term. Each and every day was action packed and filled to the brim with archery, air-Rifle shooting, crossbow, abseiling, climbing, team games, bush craft skills, kayaking, coastal walks, gorge walking, axe throwing, high ropes course, low ropes course, nightline, wide game, beach walk, den building, assault course, raft building and zip line! A huge thanks to Mr Ward, Miss Cadwallader and Mrs Smith for supporting this visit so brilliantly. The children were all amazing and I know that long lasting memories have been made. We look forward to returning next year.



## Diary Dates

Monday 8 <sup>th</sup> May 23	<b>KING's Coronation Day – School Closed</b>
Tuesday 9 <sup>th</sup> May – Friday 12 <sup>th</sup> May	<b>Y6 SATS Tests</b>
Thursday 11 <sup>th</sup> May 23	<b>Y4 Manchester RE Visit</b>
Thursday 25 <sup>th</sup> – Friday 26 <sup>th</sup> May	<b>Y3 Residential - Delamere</b>
Friday 26 <sup>th</sup> May 23	School Closes for <b>HALF TERM</b>
Monday 5 <sup>th</sup> June 23	<b>INSET Day – Staff ONLY</b>
Tuesday 6 <sup>th</sup> June 23	School opens for pupils
Monday 12 <sup>th</sup> June 23 – 6.00pm	New Starters (Reception) Evening
Wednesday 21 <sup>st</sup> – Friday 23 <sup>rd</sup> June	<b>Y6 to Conway</b>
Friday 23 <sup>rd</sup> June 23	Themed Lunch – Beach Day
Tuesday 4 <sup>th</sup> July 23	Themed Lunch – 4 <sup>th</sup> July (American Themed)
Thursday 13 <sup>th</sup> July 23	Sports Day – <b>Nursery &amp; KS1 (am) KS2 (pm)</b>
Friday 14 <sup>th</sup> July 23	Annual Reports out to parents.
Friday 14 <sup>th</sup> July 23	<b>Y6 to Tarporley High School</b>
Monday 17 <sup>th</sup> July 23	Class Transition Day
Tuesday 18 <sup>th</sup> July 23	Sports Day Back-up Day (if wet weather on 13 <sup>th</sup> July)
Wednesday 19 <sup>th</sup> July 23 – <b>5pm</b>	<b>Y6 Leavers Assembly</b>
Thu 20 <sup>th</sup> & Fri 21 <sup>st</sup> July 23	Class Silent Discos
Friday 21 <sup>st</sup> July 23	School Closes for <b>SUMMER HOLIDAYS</b>



Sign of the Week  
1<sup>st</sup> – 6<sup>th</sup> May 2023

This week's sign is 'Green'  
Join in with our Sign of the Week. Make and share your own video using the hashtag #WellTalkKelsall.



Green



Green

**Be Curious, Creative & Kind**  
**Have a lovely weekend**

**Mr Wearing, Mrs White and the Kelsall TEAM**



Has someone done something online that has made you or a child or young person you know, feel worried or unsafe? Click on the link to the left



Follow us on Twitter.  
@KelsallSchool